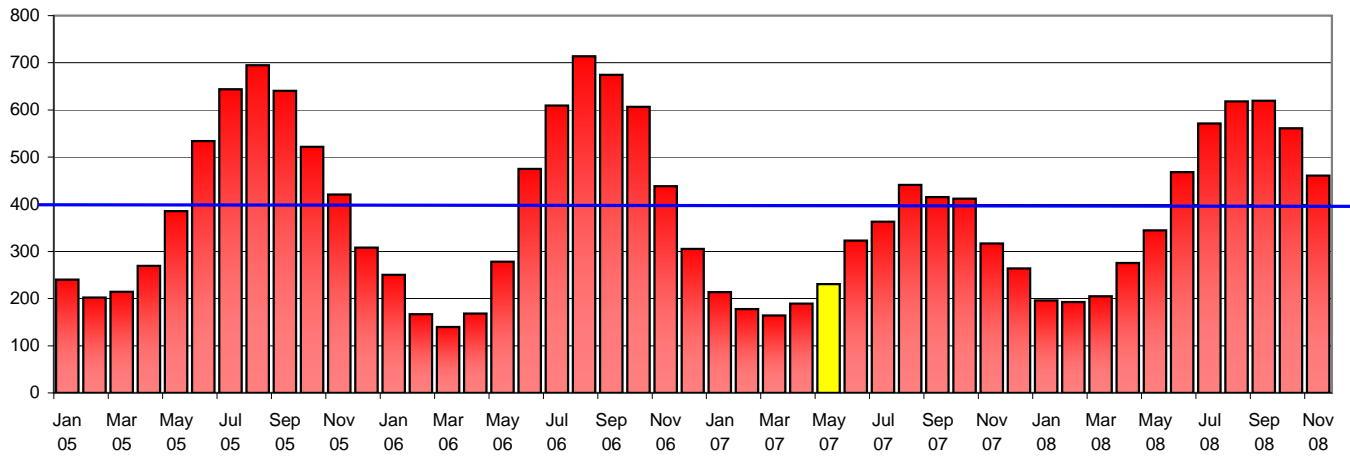
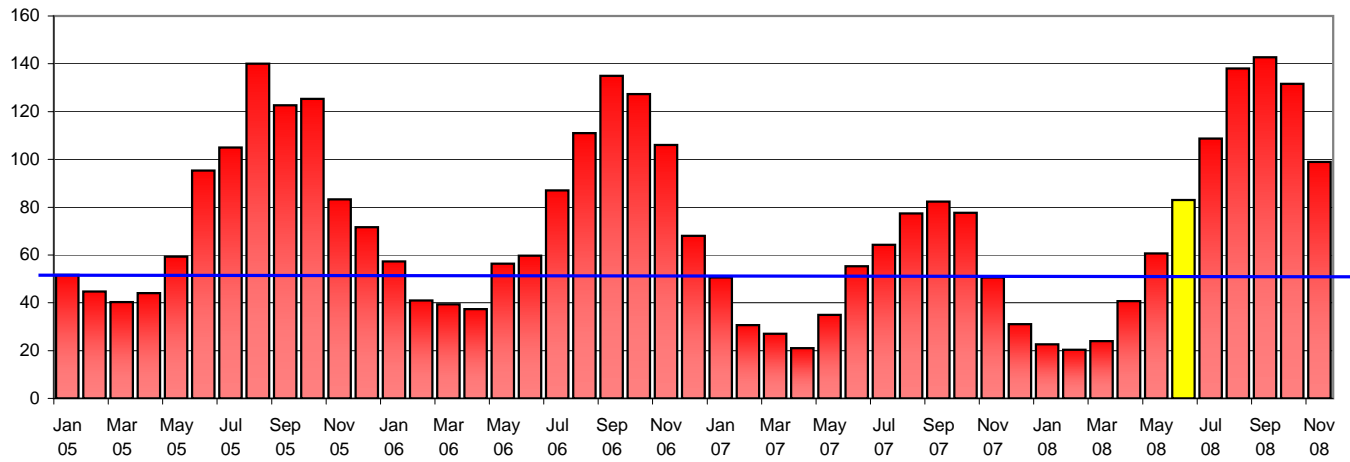


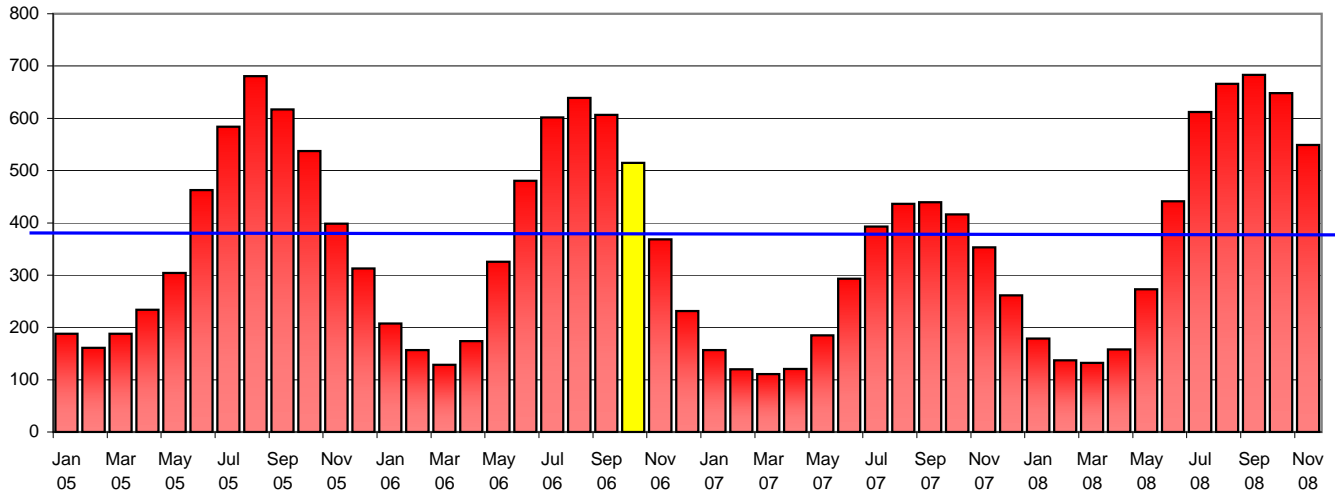
East Valley
New Shelter - May 2007 (\$23.4 million)



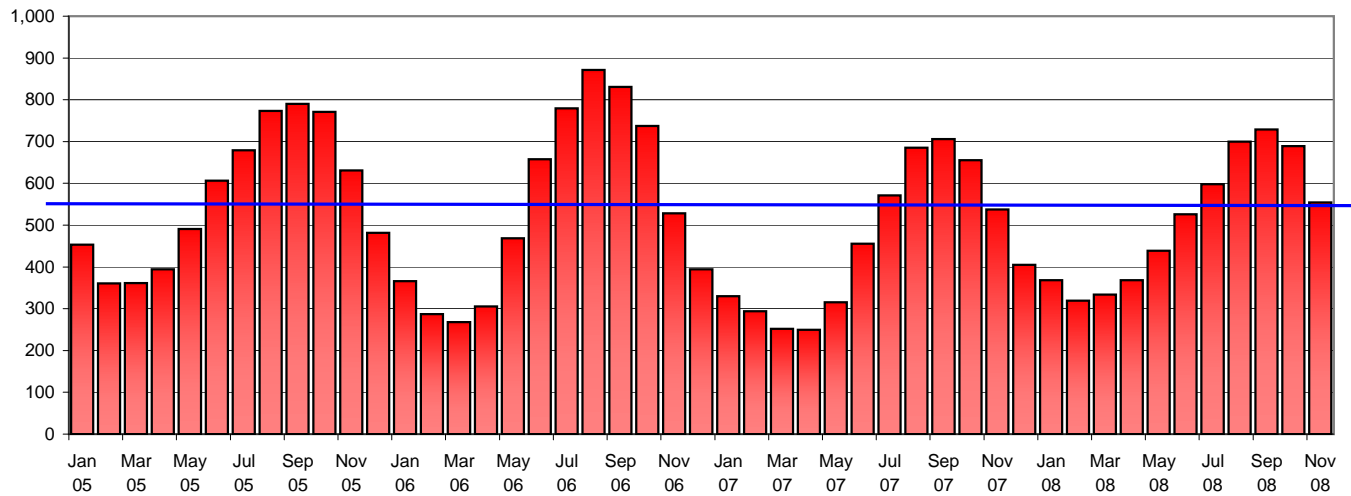
Harbor
New Shelter - June 2008 (\$18.7 million)



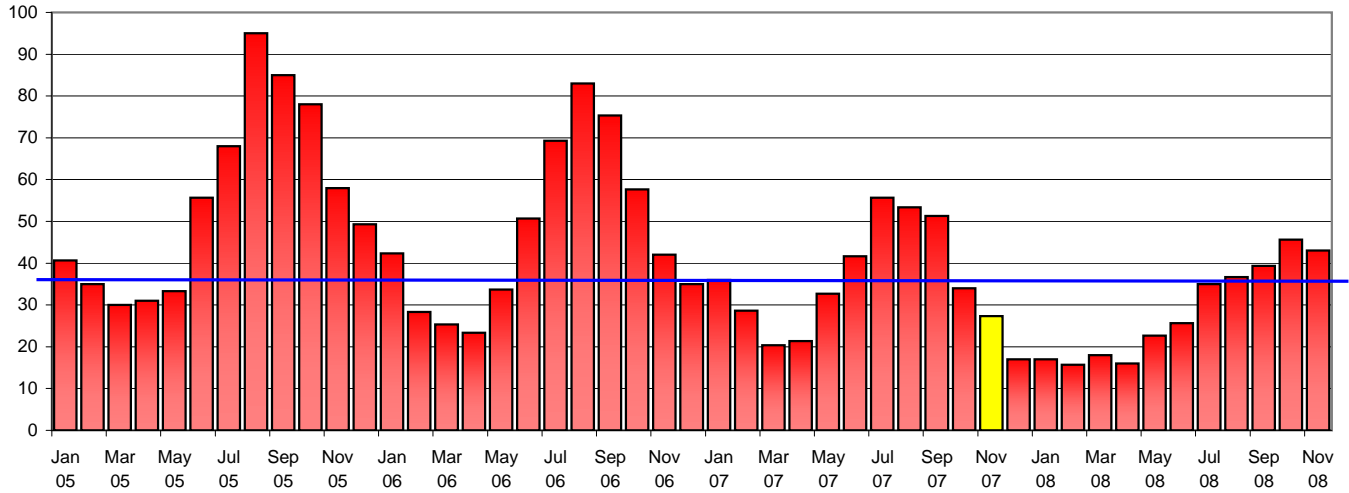
**North Central
New Shelter - October 2006 (\$10.6 million)**



**SLA & Annex
New Shelter - None**



West LA
New Shelter - November 2007 (\$25.5 million)



West Valley
New Shelter - August 2007 (\$17.8 million)

