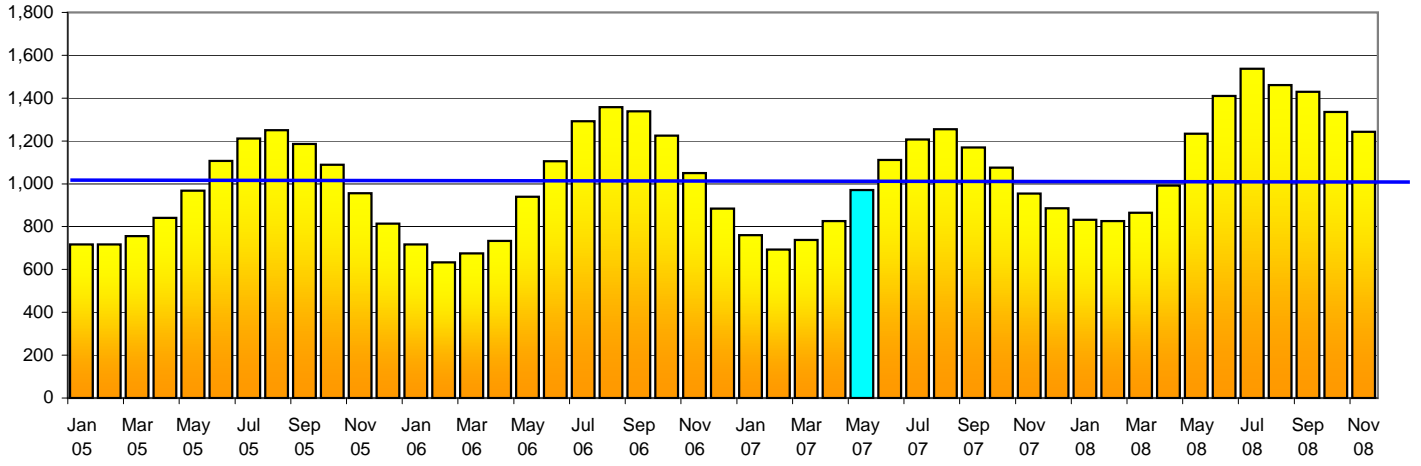
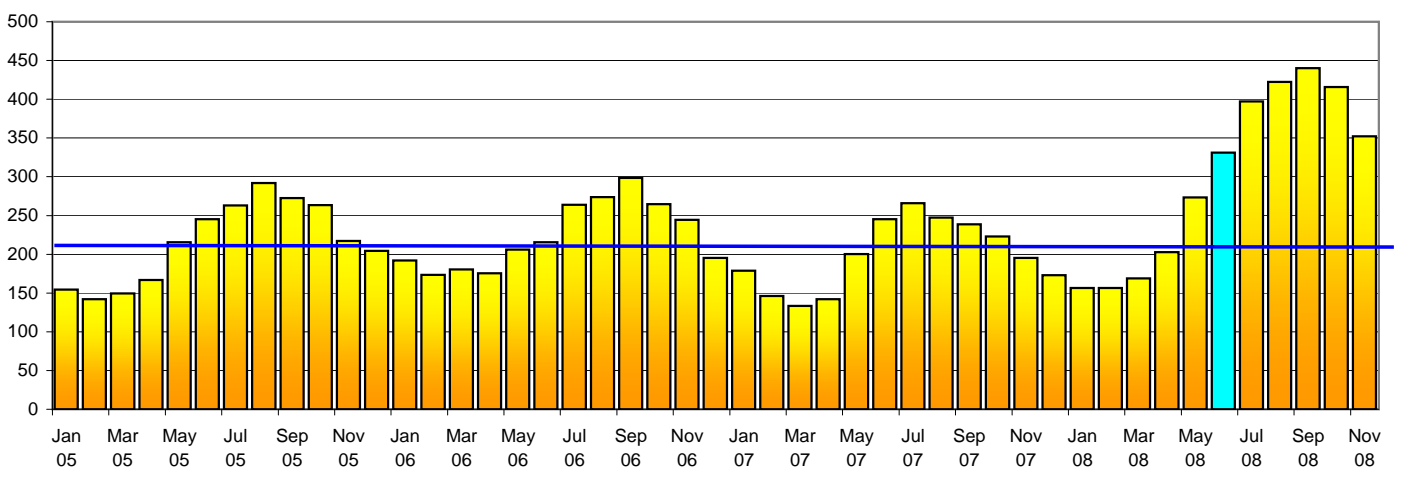


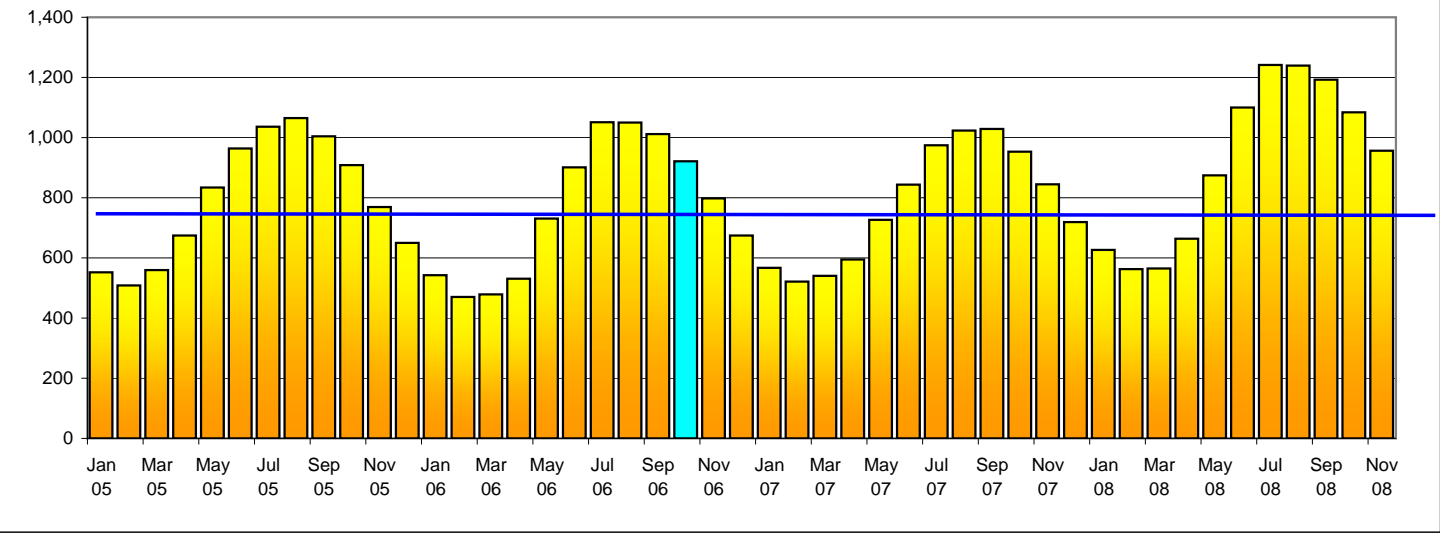
**East Valley
New Shelter - May 2007 (\$23.4 million)**



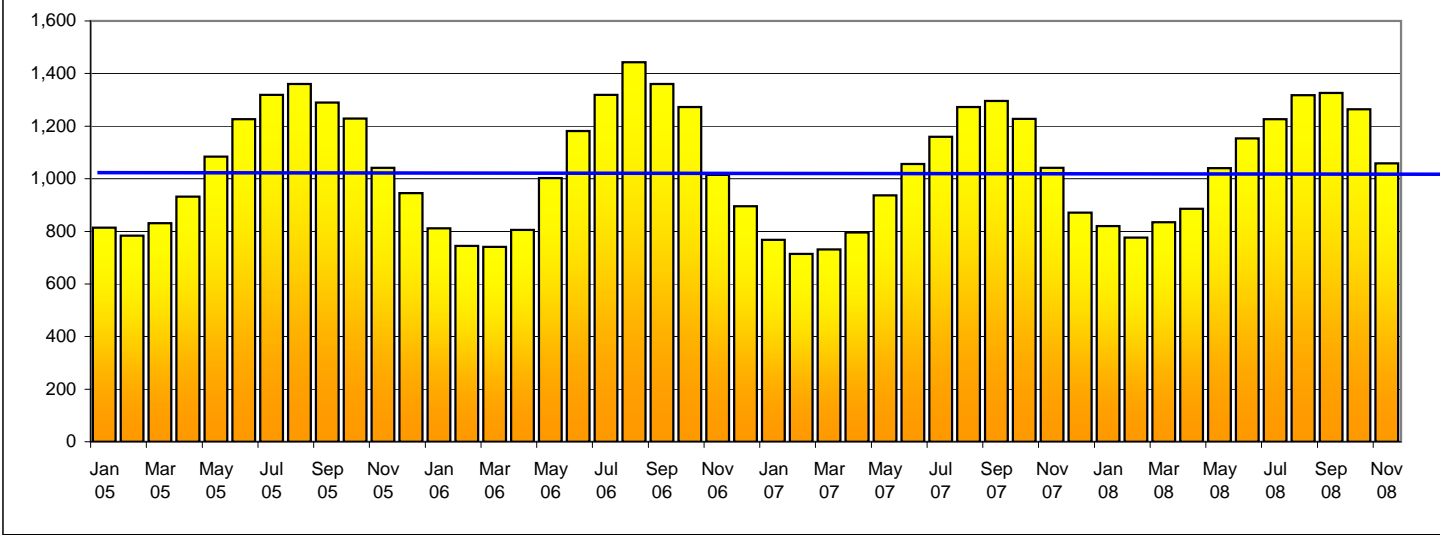
**Harbor
New Shelter - June 2008 (\$18.7 million)**



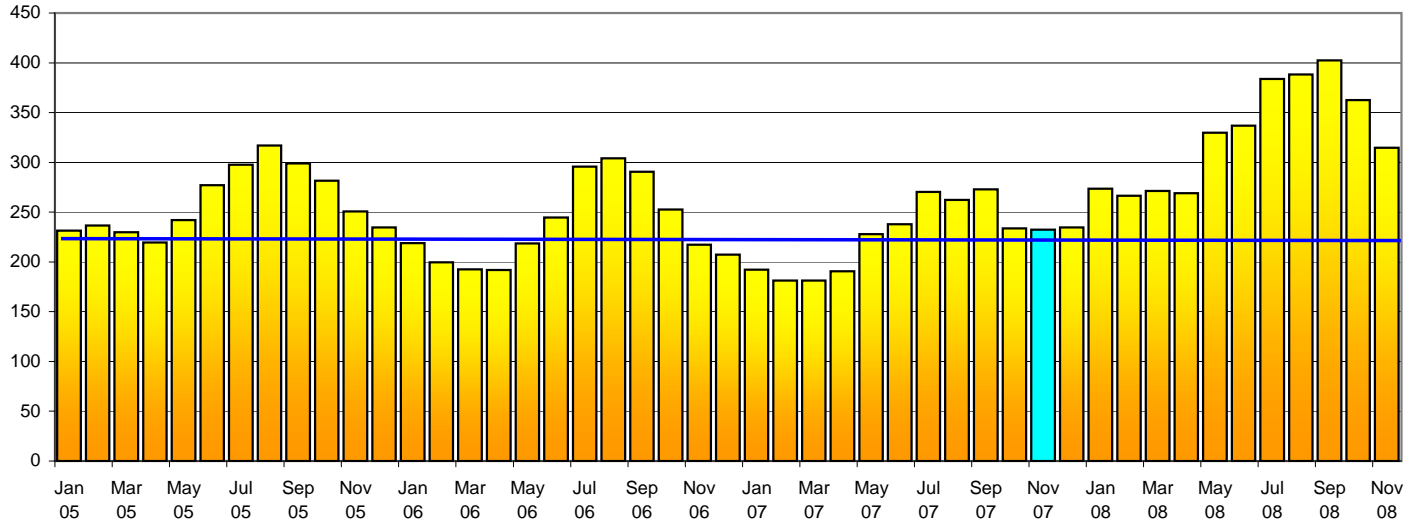
**North Central
New Shelter - October 2006 (\$10.6 million)**



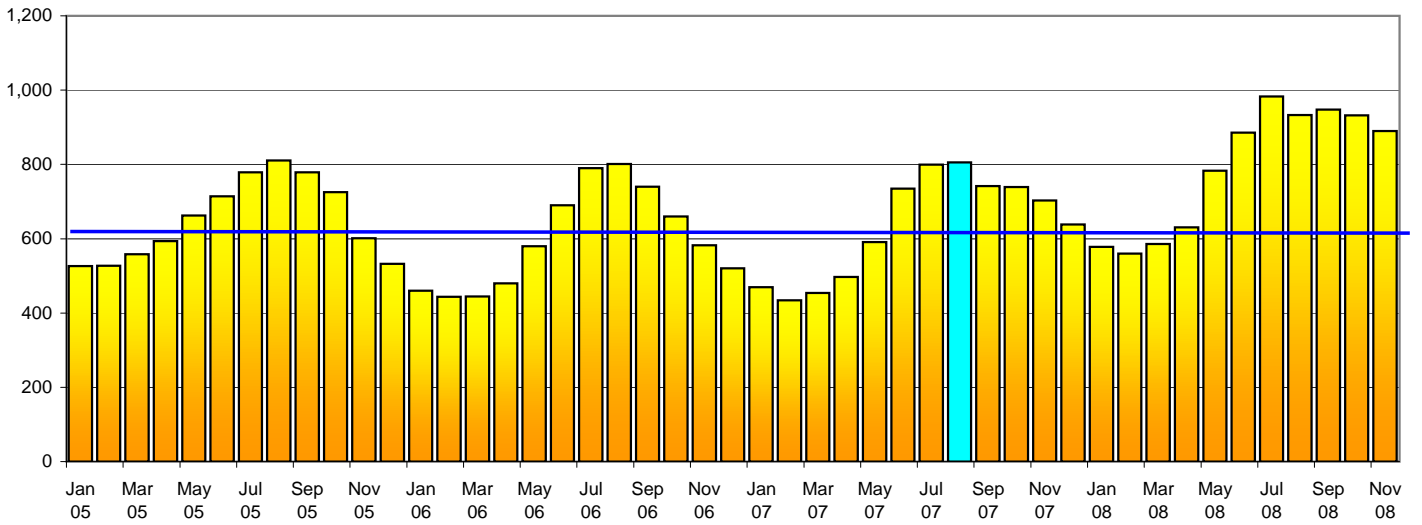
**SLA & Annex
New Shelter - None**



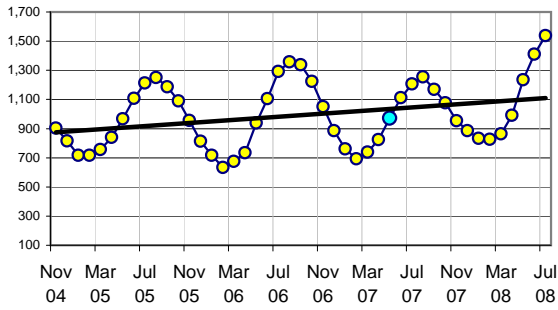
West LA
New Shelter - November 2007 (\$25.5 million)



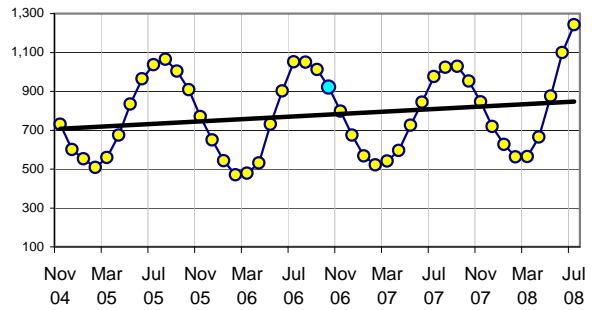
West Valley
New Shelter - August 2007 (\$17.8 million)



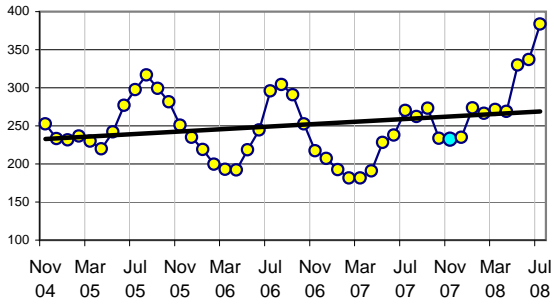
East Valley



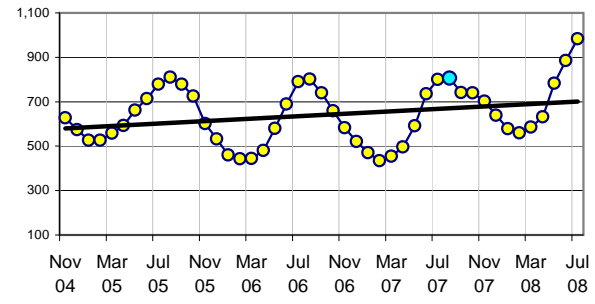
North Central



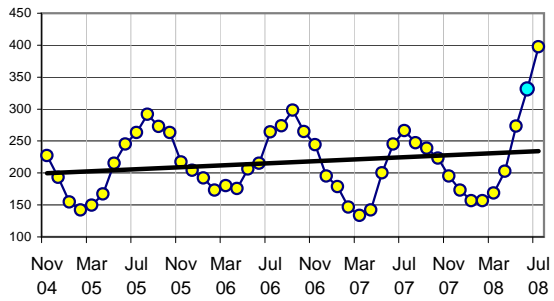
West LA



West Valley



Harbor



South LA & Annex

